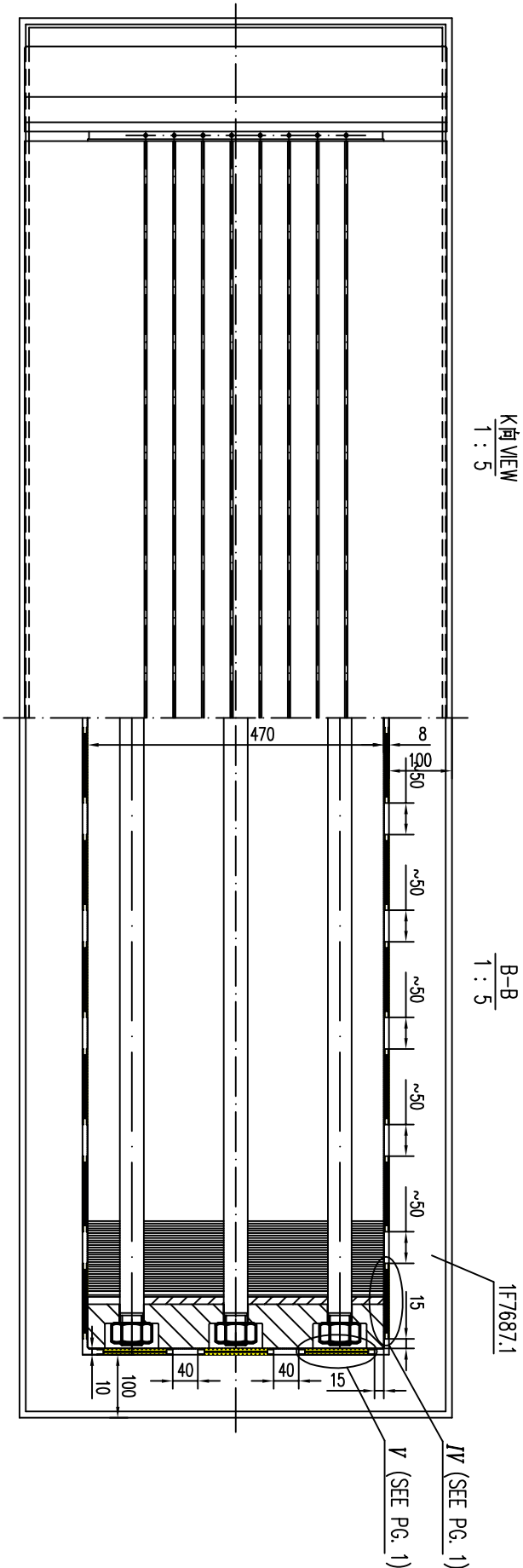
 $\epsilon/2B$

1. $\exists ?F7668.0?F7668.1\text{;??}\delta m n???$.
2. $\exists ?F7687.0?F7687.1;\prec TO\delta m n:???$
3. $\exists ?W\Delta?:?\phi:A?$
4. $A?:??A?A?K\overline{\phi} \cdot \overline{\delta} A????\cdot \delta m$.
5. $\Lambda m?:A?d\downarrow v!S("T">$

NOTES

1. PLEASE PAY ATTENTION TO THE DIFFERENCE OF THE LEAD.
2. PLEASE PAY ATTENTION TO THE DIFFERENCE OF THE DAMPER COLLAR.
3. WHEN POLE COIL AT SITE, THE UPPER FIELD CONNECTION SHALL BE FIT OF POLE E
4. THE CLEARANCE BETWEEN THE POLE CORE AND THE POLE COIL SHALL BE STUJFED
5. THE POLE SHALL BE WEIGHTED AND MARKED ON "T" AFTER ASSEMBLYING .



D325-12-
1.2(Δ)÷
Δ Z ? ~
1 2 3 4
? N U M
? (: S
p i
~ 6 Δ ?

[illegible]

CLIENT	VIETNAM ELECTRICITY GRID POWER PROJECT MANAGEMENT BOARD No.7 AN KHE HYDROPOWER PLANT AN KHE-1A NAK HYDROPOWER PROJECT
SUPPLIER	BVN DONGFANG ELECTRIC CORPORATION
DESIGN UNIT	DONG FANG ELECTRICAL MACHINERY CO.,LTD.